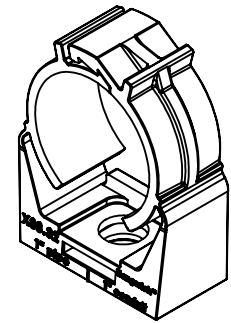
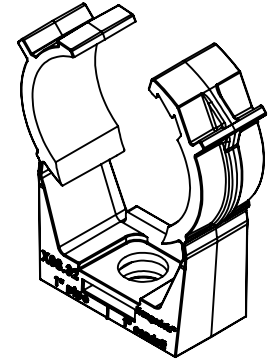
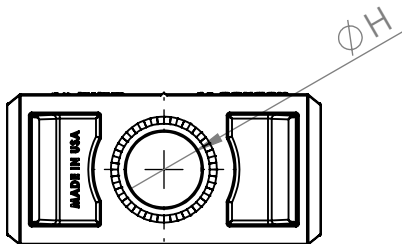
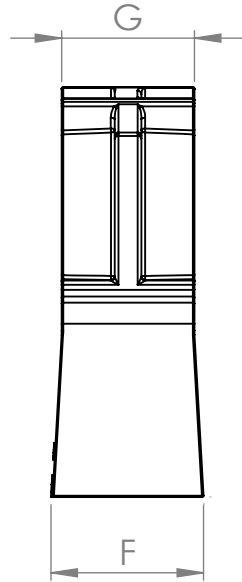
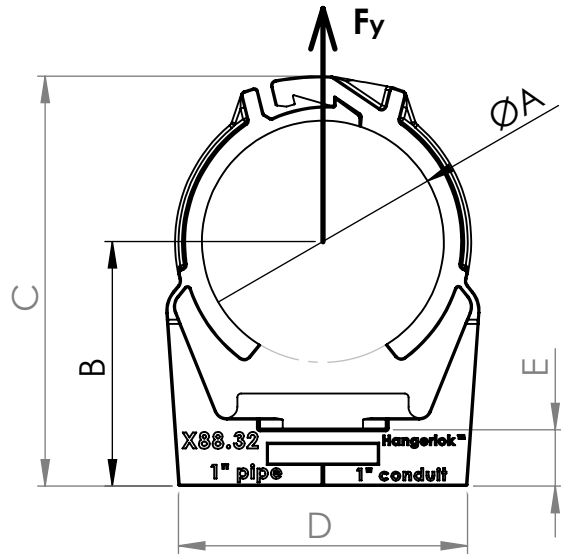





PARAMETRIC TABLE

H88 SERIES	ØA			B	C	D	E	F	G	ØH	Fy (Straight Pull, lbs)
		Inch	MM								
H88.32-LOK	Min	1.26	32.00	1.27	2.14	1.51	0.29	0.80	0.69	0.39	360-376
	Max	1.40	35.56	1.35	2.21						



PROPRIETARY AND CONFIDENTIAL

THIS DRAWING AND INFORMATION HEREIN IS THE PROPERTY OF LITCHFIELD INTERNATIONAL INC., AND IS TO BE USED IN STRICT CONFIDENCE. THIS DRAWING SHALL NOT BE REPRODUCED, COPIED OR GIVEN TO ANY THIRD PARTY WITHOUT EXPRESSED WRITTEN PERMISSION FROM LITCHFIELD INTERNATIONAL INC.

DIMENSIONS ARE IN: INCH TOLERANCES UNLESS SPECIFIED		NAME		DATE		 Litchfield International Inc.	
.XXX	±0.005	DRAFTSMAN	PDT	7/8/2018			
.XX	±0.03	CHECKER	PDT			PART DESCRIPTION	
.X	±0.01	DESIGNER	HANGERLOK			H88.32-LOK	
ANGULAR	±1°	APPROVED	HANGERLOK			ASSY NO.	
MATERIAL	SEE NOTE	RELEASE DATE				PC PART NO.	
FINISH	SEE NOTE	COMMENTS / REMARKS				H88.32-LOK	
QUANTITY	SEE NOTE	1. WEIGHT : SEE NOTE				SIZE	DWG NO.
		2. VOLUME : SEE NOTE				A	H88.32-LOK
						SCALE:	2:1
						 	
						SHEET 1 OF 1	