

4

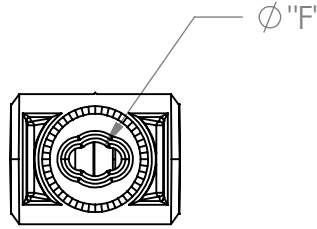
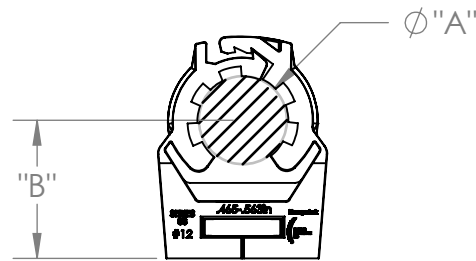
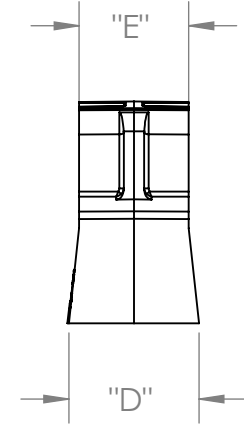
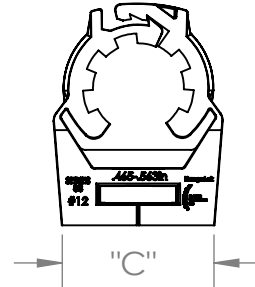
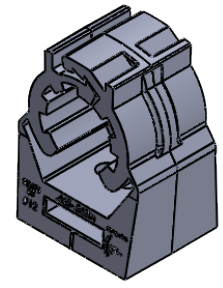
3

2

1

SIZE TABLE	Ø A		B	C	D	E	Ø F
	MIN.	MAX.					
INCHES	.47	.56	.73	.80	.69	.56	.18
MM	12.0	14.3	-	-	-	-	-

PART NUMBER	MATERIAL
<u>H</u> 88.12-LOK	NYLON 6/6
<u>A</u> 88.12-LOK	HDPE



**PROPRIETARY AND CONFIDENTIAL**  
 THE INFORMATION CONTAINED IN THIS DRAWING IS THE SOLE PROPERTY OF LITCHFIELD-HANGERLOK. ANY REPRODUCTION IN PART OR AS A WHOLE WITHOUT THE WRITTEN PERMISSION OF LITCHFIELD\_HANGERLOK IS PROHIBITED.

UNLESS OTHERWISE SPECIFIED:		NAME	DATE
DIMENSIONS ARE AS NOTED IN TABLE.	DRAWN	JS	11/20/2020
	MFG APPR.		
	Q.A.		
	COMMENTS:		
MATERIAL	See Chart		
FINISH	-		

**Litchfield-HangerLok**

TITLE: HANGERLOK #12

SIZE	DWG. NO.	REV
<b>A</b>	X88.12-LOK rev A	<b>A</b>

DO NOT SCALE DRAWING      SHEET 1 OF 1

4

3

2

1

D

D

C

C

B

B

A

A