

4

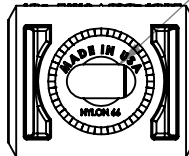
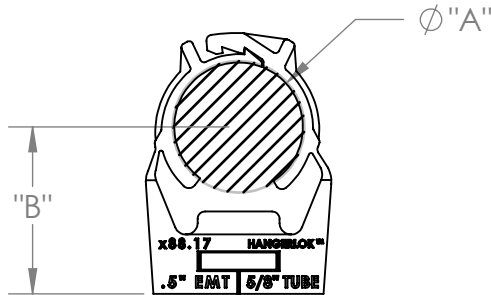
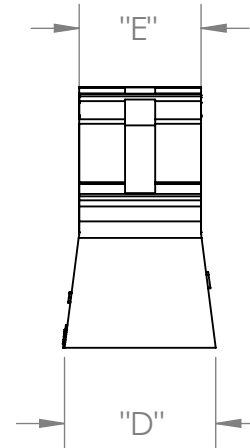
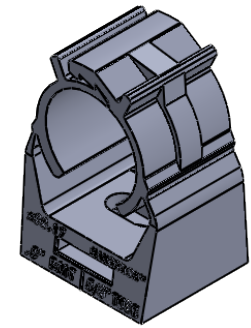
3

2

1

SIZE TABLE	Ø A		B	C	D	E	Ø F
	MIN.	MAX.					
INCHES	0.67	0.77	0.87	0.89	0.79	0.63	.18
MM	17.0	19.5	-	-	-	-	-

PART NUMBER	MATERIAL
<u>H</u> 88.17-LOK	NYLON 6/6
<u>A</u> 88.17-LOK	HDPE



PROPRIETARY AND CONFIDENTIAL
 THE INFORMATION CONTAINED IN THIS DRAWING IS THE SOLE PROPERTY OF LITCHFIELD-HANGERLOK. ANY REPRODUCTION IN PART OR AS A WHOLE WITHOUT THE WRITTEN PERMISSION OF LITCHFIELD_HANGERLOK IS PROHIBITED.

UNLESS OTHERWISE SPECIFIED:	NAME	DATE
DIMENSIONS ARE AS NOTED IN TABLE.	DRAWN JS	11/20/2020
	MFG APPR.	
	Q.A.	
	COMMENTS:	
MATERIAL See Chart		
FINISH -		

Litchfield-HangerLok

TITLE: HANGERLOK #17		
SIZE A	DWG. NO. X88.17-LOK rev A	REV A

DO NOT SCALE DRAWING

SHEET 1 OF 1

4

3

2

1

D

D

C

C

B

B

A

A