

4

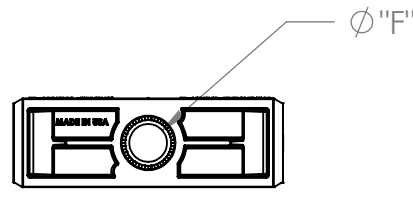
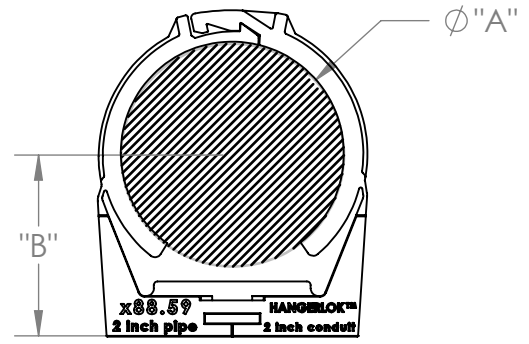
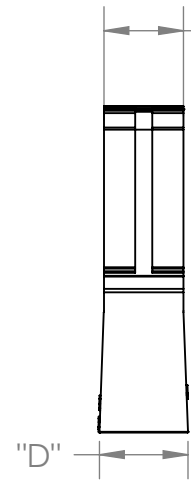
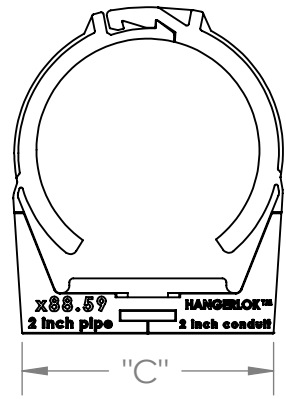
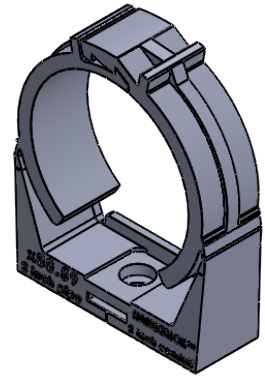
3

2

1

SIZE TABLE	Ø A		B	C	D	E	Ø F
	MIN.	MAX.					
INCHES	2.32	2.52	1.94	2.62	0.93	0.83	0.39
MM	59.0	64.0	-	-	-	-	-

PART NUMBER	MATERIAL
H88.59-LOK	NYLON 6/6
A88.59-LOK	HDPE



PROPRIETARY AND CONFIDENTIAL
 THE INFORMATION CONTAINED IN THIS DRAWING IS THE SOLE PROPERTY OF LITCHFIELD-HANGERLOK. ANY REPRODUCTION IN PART OR AS A WHOLE WITHOUT THE WRITTEN PERMISSION OF LITCHFIELD_HANGERLOK IS PROHIBITED.

UNLESS OTHERWISE SPECIFIED:	NAME	DATE
DIMENSIONS ARE AS NOTED IN TABLE.	DRAWN JS	11/20/2020
	MFG APPR.	
	Q.A.	
	COMMENTS:	
MATERIAL See Chart		
FINISH -		

Litchfield-HangerLok

TITLE: HANGERLOK #59

SIZE A	DWG. NO. X88.59-LOK rev A	REV A
---------------	---------------------------	--------------

DO NOT SCALE DRAWING SHEET 1 OF 1

4

3

2

1

D

D

C

C

B

B

A

A